



PASK Polyclonal Antibody

Catalog No	YP-Ab-04896
Isotype	IgG
Reactivity	Human;Mouse
Applications	WB;ELISA
Gene Name	PASK KIAA0135
Protein Name	PAS domain-containing serine/threonine-protein kinase (PAS-kinase) (PASKIN) (hPASK) (EC 2.7.11.1)
Immunogen	Synthesized peptide derived from human protein . at AA range: 1100-1180
Specificity	PASK Polyclonal Antibody detects endogenous levels of protein.
Formulation	Liquid in PBS containing 50% glycerol, and 0.02% sodium azide.
Source	Polyclonal, Rabbit,IgG
Purification	The antibody was affinity-purified from rabbit antiserum by affinity-chromatography using epitope-specific immunogen.
Dilution	WB 1:500-2000 ELISA 1:5000-20000
Concentration	1 mg/ml
Purity	≥90%
Storage Stability	-20°C/1 year
Synonyms	
Observed Band	145kD
Cell Pathway	Cytoplasm . Nucleus . Localizes in the nucleus of testis germ cells and in the midpiece of sperm tails.
Tissue Specificity	Ubiquitously expressed, with slightly higher expression in brain, prostate and testis. Reduced expression was found in placenta. Present in germ cells of testis and in the midpiece of sperm tails (at protein level).
Function	catalytic activity:ATP + a protein = ADP + a phosphoprotein.,enzyme regulation:Activated by autophosphorylation on Thr-1161 and Thr-1165 and inhibited by the first PAS domain.,PTM:Autophosphorylated on Thr-1161 and Thr-1165.,similarity:Belongs to the protein kinase superfamily. CAMK Ser/Thr protein kinase family.,similarity:Contains 1 protein kinase domain.,similarity:Contains 2 PAS (PER-ARNT-SIM) domains.,tissue specificity:Ubiquitously expressed, with slightly higher expression in brain, prostate and testis. Reduced expression was found in placenta.,
Background	This gene encodes a member of the serine/threonine kinase family that contains two PAS domains. Expression of this gene is regulated by glucose, and the encoded protein plays a role in the regulation of insulin gene expression. Downregulation of this gene may play a role in type 2 diabetes. Alternatively spliced transcript variants encoding multiple isoforms have been observed for this gene. [provided by RefSeq, Nov 2011],



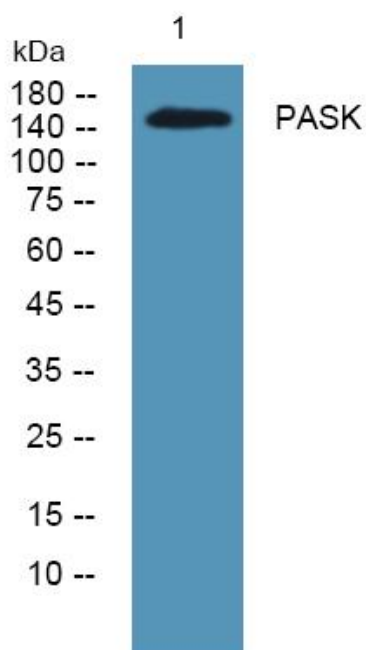
matters needing attention

Avoid repeated freezing and thawing!

Usage suggestions

This product can be used in immunological reaction related experiments. For more information, please consult technical personnel.

Products Images



Western blot analysis of lysates from SH-SY5Y cells, primary antibody was diluted at 1:1000, 4° over night